



E-211

Description

The E-211 is a simple general purpose controller. This controller comes in 12 and 24 volt options for either gas or diesel engines and includes overspeed protections and an additional speed set. The speed set can be enabled by setting the respective pin “high” (12V/24V). The controller can be calibrated by the customer using potentiometers to adjust speed sets, gain, and integral settings for optimal engine performance. All controllers come conformally coated in a rugged enclosure.

Features

High impact plastic case

Power supply 12/24VDC

Speed band +/- 0.3% at ambient temp

Temperature stability +/-1.5%

Speed range 3:1 standard

Speed set

Overspeed set

Low speed set

Gain and integral adjustments

Speed input (magnetic pickup, ignition)

Mounting attitude: any
(Vertical recommended)

Functionally tested

Specifications

Mechanical

Operating Temp -30 to 85° C
-22 to 185° F
Weight 1lb

Power

Supply Voltage 12V or 24V
Power Consumption 5W
External Fuse Required 7.5A

Speed Sensor

Frequency Range up to 10kHz
Voltage 100V

Governor

Max Current 4A

Speed Set

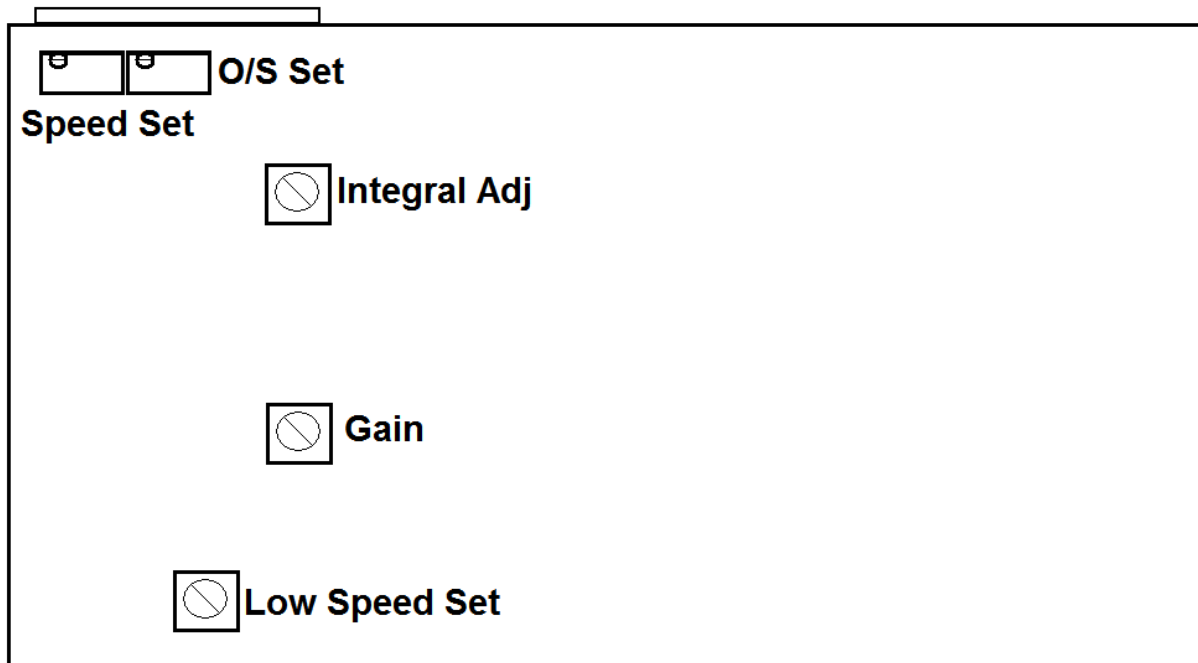
Threshold 8V

Wiring

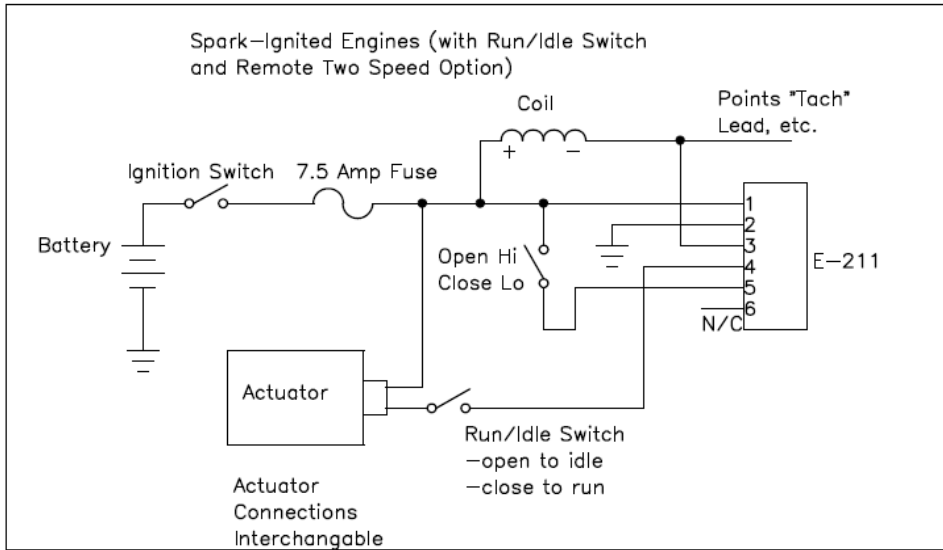
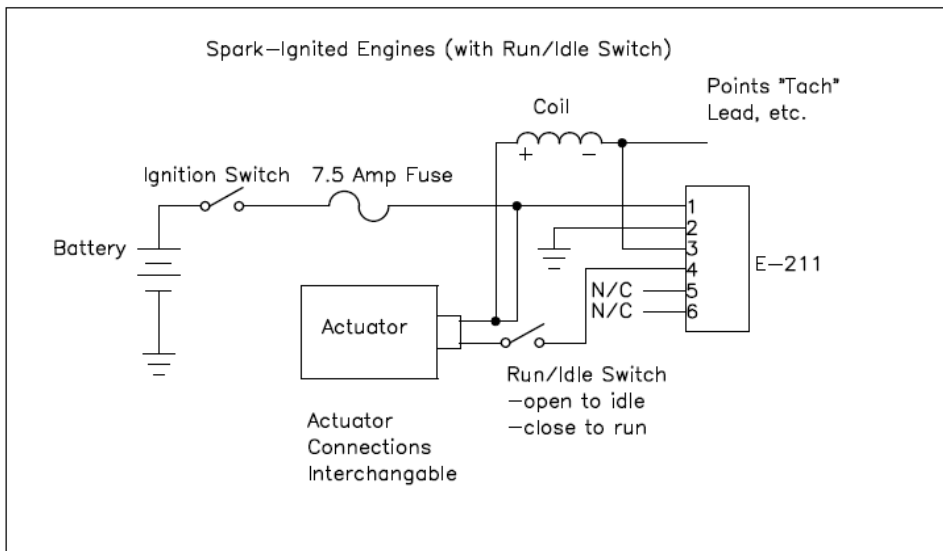
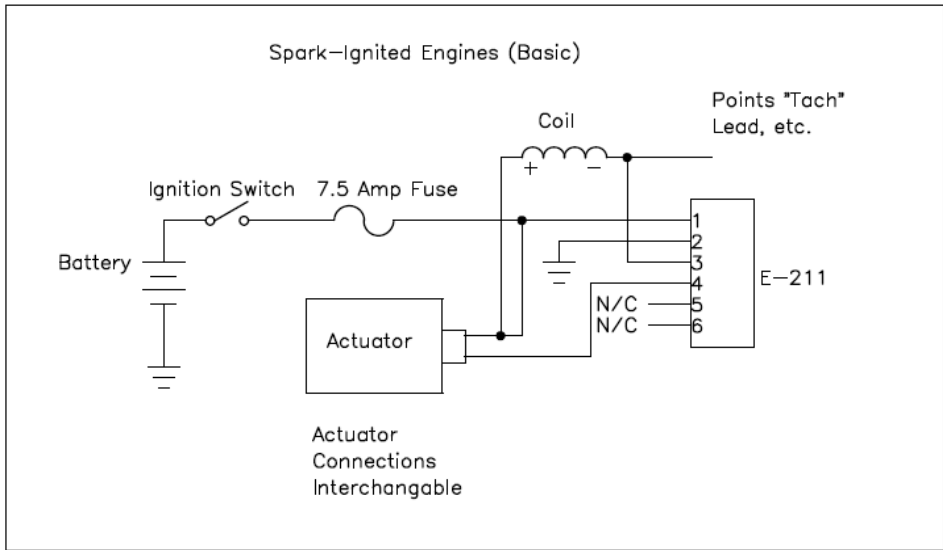
Pin	Description
1	+12/24V Power
2	Ground
3	Speed Sensor (Tach)
4	Governor
5	Speed Set
6	Overspeed

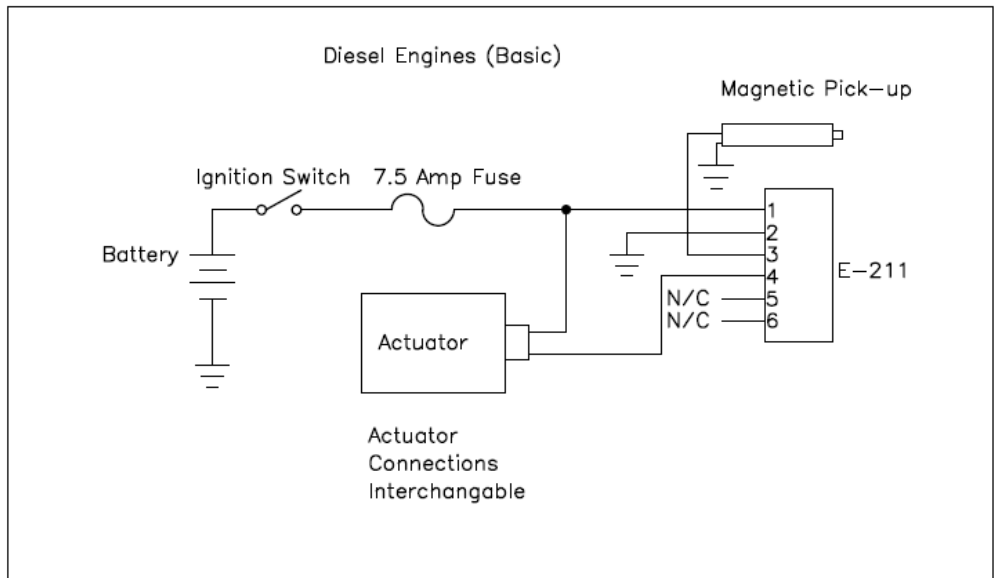
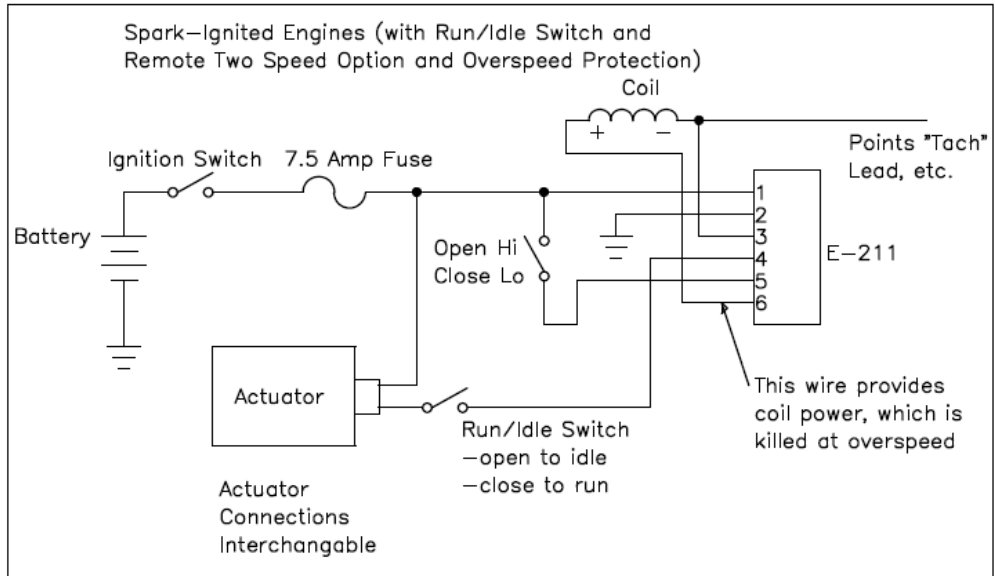
NOTE: The governor pins must not be powered while the controller is not, this may cause damage to the controller. Please be sure that governor is powered from same supply as controller to prevent this.

E-211 Pot Locations

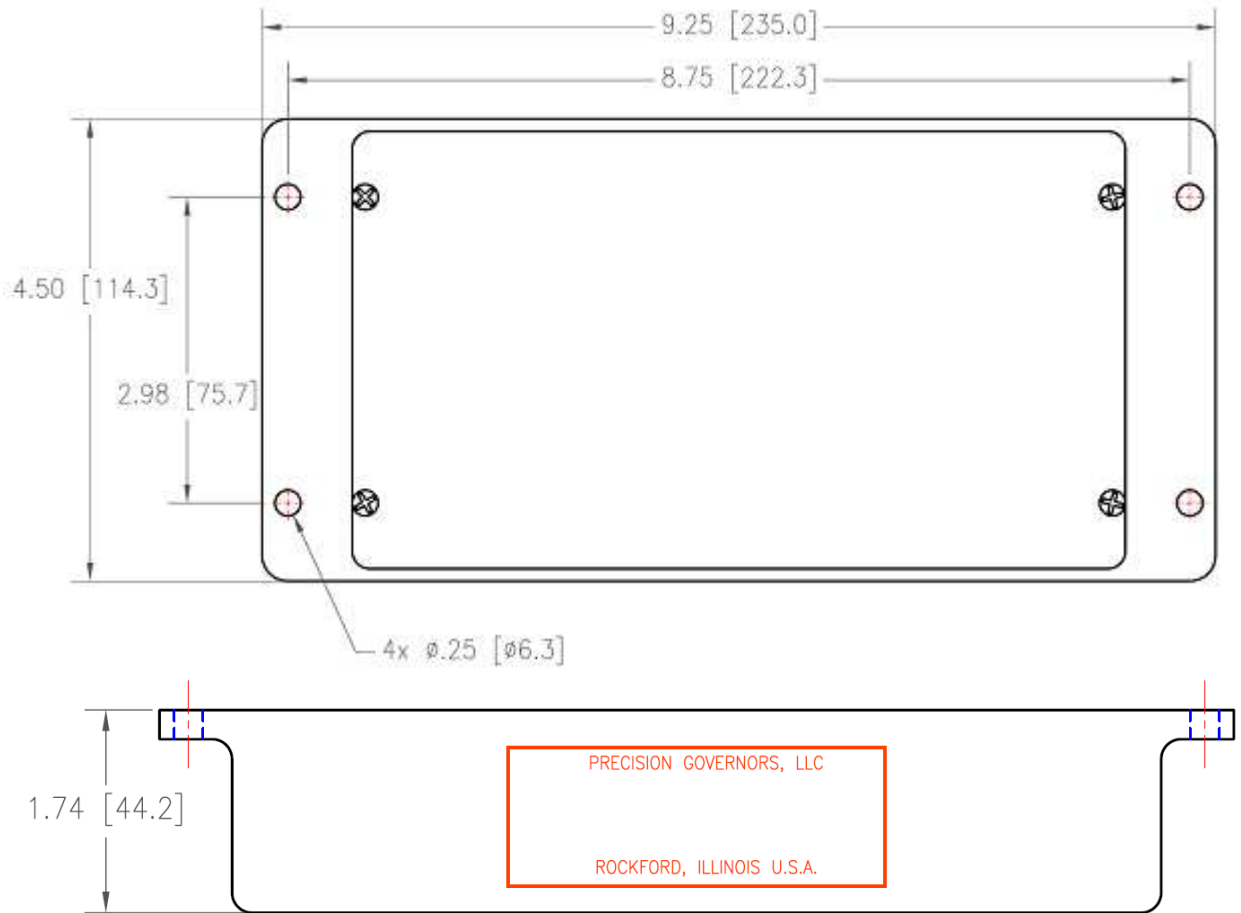


E-211 Electronics- Adjustment POTS





Dimensions



Reference

Model	Part #	Description
A	9011	2 speed
B	9012	Overspeed protection
C	9013-1	With main and AUX
D	9014	Diesel
E	9015	2 speed and overspeed
F	9013	With multi turn pot