

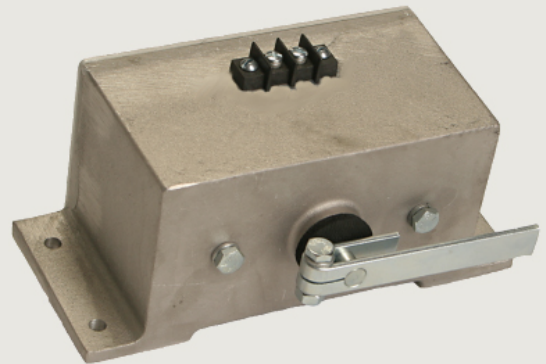


ENGINEERED CONTROL SOLUTIONS

Precision Governors LLC

Diesel and Carbureted Engine Rotary Actuator *Model SF Governing ROTARY ACTUATOR*

Precision Governor's Model SF rotary actuator provides 43° of rotation for actuation of all types of engines. Robust design and only one moving part supported by precision ball bearings within a sealed case provides reliable operation and long life. Low 20 watt average power consumption provides low temperature rise allowing for higher ambient temperature operating conditions up to 125 °C. Installed on diesel, LPG, NG, or petrol engines with a PG speed controller, and a magnetic pickup to provide the speed signal, the SF Governing Actuator provides the solution for accurate engine speed control. On spark ignited engines the ignition can provide the speed signal for the controller.



Features:

- ◆ High Torque Output Produces maximum of 0.75 ft-lb of rotary action on 3/8-inch shaft. Rotation up to 43°, clockwise or counterclockwise.
- ◆ No Power Shutdown When actuator is de-energized, the spring loaded shaft returns to shutdown position.
- ◆ Corrosion and Moisture Resistant Rugged aluminum case and corrosion resistant plated surfaces are factory sealed.
- ◆ Actuator Response Time 0.050 seconds.
- ◆ 12-volt & 24-volt Rating.
- ◆ Compact Package Easy-to-install unit (3.5 x 3.5 x 8 inches).
- ◆ Zero Droop Isochronous control with zero droop over the complete speed range providing better utilization of engine rated horsepower.
- ◆ Multiple fuels Used on diesel, LPG, Natural Gas or petrol engines.

Precision Governors LLC, 2322 7th Ave. , Rockford, IL 61104

www.precisiongovernors.com

contact us at sales@precisiongovernors.com, Phone: 815.229.5300

Typical Applications:

- Forklifts
- Gen Sets
- Power Carts
- Pumps & Irrigation
- Material Handling Equipment
- Construction Equipment
- Scrubbers & Sweepers

Specifications

ELECTRICAL

Power Input 12 or 24 Volt DC Available

12 VDC

Coil Resistance 2.3 Ohms
Maximum Continuous Current 3.9 Amps

24 VDC

Coil Resistance 9.0 Ohms
Maximum Continuous Current 1.0 Amps

Connector

Terminal Strip 2 Position

MECHANICAL

Dimensions:

3.5 x 3.5 X 8 inches

Mounting Pattern:

7.125 X 2.0 inches, Any Attitude

Stroke:

Up to 43 ° clockwise or counter clockwise

Materials:

Corrosion resistant Aluminum and Zinc Plated Steel

Weight:

7.5 lbs

Response Time Typical:

50 msec.

ENVIRONMENTAL

Operating Temperature Range:

-13°F to 257°F
(-25°C to 125°C)

Ordering: *Model SF Governing Rotary Actuator*

Part No.

Description

9030 - 0	SF Actuator 12V, Generic Lever Arm
9030 - 2	SF Actuator 12V, JLG Lever Arm
9030 - 3	SF Actuator 12V, Genie Lever Arm
9030- 4	SF Actuator 12V, Grove Lever Arm
9030 - 24	SF Actuator 24V Generic Lever Arm
9030 - 6	SF Actuator 12V, SKYJACK Lever Arm
9030 - 7	SF Actuator 12V, Zamboni Lever Arm

Precision Governors, LLC, 2322 7th Ave. , Rockford, IL 61104

www.precisiongovernors.com

Contact us at sales@precisiongovernors.com, Phone: 815.229.5300